



Agilent M9360A PXI Attenuator/Preselector

DISCOVER the Alternatives...

Industries and Applications

- Aerospace and defense
- Wireless communications
- Radar and wideband signal capture

Product Description

With attributes that provide enough performance to satisfy even the most demanding spectrum analysis applications, the M9360A PXI Attenuator/Preselector is a 3-slot 3U, combination module providing attenuation and preselection signal conditioning for numerous system applications with an electronically tuneable, 4-stage, YIG-tuned filter based RF-input pre-selector, and broadband switches for signal distribution.

Models

M9360A PXI Attenuator/Preselector

Main Features and Benefits

Product features	Your benefit
Frequency range	100 kHz to 26.5 GHz
Bypass path	Automatically route signals around the band limited preselector for additional bandwidth
35 MHz to 120 MHz bandwidth (preselected, < 3 GHz)	Allows you to analyze large bandwidth signals
40 MHz to 120 MHz bandwidth (preselected, ≥ 3 GHz)	
70 dB input step attenuator	Increased dynamic range
Multiple programmatic interfaces	Easy integration into existing test environments and reduced development time
PXI form-factor	Conforms to Modular Open Systems Approach (MOSA)

Chassis slot compatibility: cPCI (J1), PXI-1, PXI Hybrid



... Agilent **MODULAR** Products

Specifications

Hardware	
Size	3 slot 3U
Tuning speed	< 5 ms @ 50 MHz step, (<i>nominal</i>)
Maximum power	RF IN: +30 dBm LO IN: +20 dBm
3 dB bandwidth	35 MHz min, 120 MHz max (preselected, < 3 GHz) 40 MHz min, 120 MHz max (preselected, ≥ 3 GHz)
Attenuator	0 dB to 70 dB in 10 dB steps
Switches	SP2T mechanical type



Agilent Technologies

Software

The M9360A Attenuator/Preselector is supplied with a comprehensive portfolio of module drivers, documentation, examples, and software tools to help you quickly develop test systems with your software platform of choice.

A soft front panel interface is provided to monitor and control the PXI Downconverter with the following functions:

- Setting input frequency and level
- Enable/Disable Preselector
- Setting attenuator level
- Setting RF/LO Out: low-band/high-band
- Setting preselector frequency
- Monitoring hardware status

Supported operating systems	Microsoft Windows® XP (32-bit), Microsoft Windows® Vista (32/64-bit), Microsoft Windows® 7 (32/64-bit)
Standard compliant drivers	IVI-COM, IVI-C, LabVIEW, MATLAB
Supported application development environments (ADE)	VisualStudio® (VB.NET, C#, C/C++), VEE, LabVIEW, LabWindows/CVI, MATLAB
Agilent IO Libraries	Includes: VISA Libraries, Agilent Connection Expert, IO Monitor

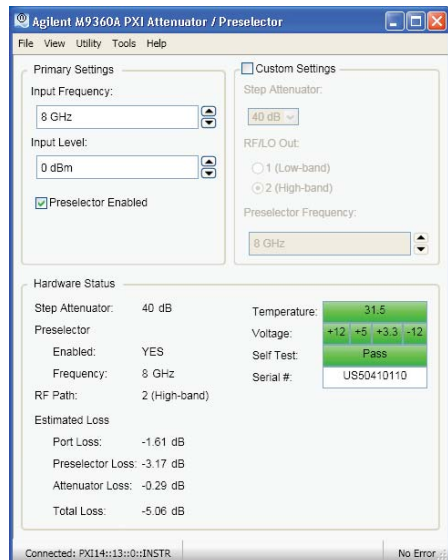


Figure 1. Agilent M9360A PXI Attenuator/Preselector, software interface.

M9360A Attenuator/Preselector

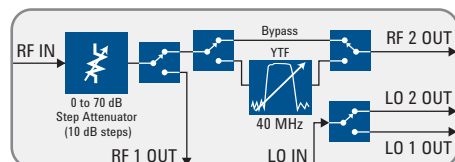


Figure 2. Simplified block diagram of the M9360A PXI Attenuator/Preselector.

Ordering Information

Typical Product Configuration

Model	Description
M9360A	PXI Attenuator/Preselector: 100 kHz to 26.5 GHz

Related products

M9202A	PXIe IF Digitizer: 12-bit, 2 GS/s
M9302A	PXI Local Oscillator: 3 GHz to 10 GHz
M9361A	PXI Downconverter: 2.75 MHz to 26.5 GHz
M9351A	PXI Downconverter: 50 MHz to 2.9 GHz
M9392A	PXI Vector Signal Analyzer: 50 MHz to 26.5 GHz
M9018A	18-slot PXIe Chassis
M9036A	PXIe Embedded Controller

Accessories

Software, example programs, and product information on CD
Cables

Advantage Services: Calibration and Warranty

Agilent Advantage Services is committed to your success throughout your equipment's lifetime.

R1282A	Annual calibration
R-51B-001-3C	1 year return-to-Agilent warranty extended to 3 years
R-51B-001-5C	1 year return-to-Agilent warranty extended to 5 years

Discover Agilent ...

www.agilent.com
www.agilent.com/find/modular
www.agilent.com/find/m9360a
 USA: (800) 829-4444



For more information on Agilent Technologies' products, applications, or services, please contact your local Agilent office. The complete list is available at: www.agilent.com/find/contactus

PICMG and the PICMG logo, CompactPCI and the CompactPCI logo, AdvancedTCA and the AdvancedTCA logo are US registered trademarks of the PCI Industrial Computers Manufacturers Group. "PCIe" and "PCI EXPRESS" are registered trademarks and/or service marks of PC-SIG. Microsoft, Windows, Visual Studio, Visual C++, Visual C#, and Visual Basic are either registered trademark or trademarks of Microsoft Corporation in the United States and/or other countries.

Product specifications and descriptions in this document subject to change without notice.

© Agilent Technologies, Inc. 2011 Printed in USA, November 21, 2011
5990-6058EN



Agilent Technologies